

### PIXIEBOB BREED GROUP (PB/PL)

The **Pixiebob (PB)** is a domestic cat with a visual similarity to the North American Bobcat yet a loving, trusting, tractable nature. The **Pixiebob Longhair (PL)** is the longhaired version of this breed.

**HEAD**..... 40 points  
Shape..... 4  
Ears..... 6  
Eyes..... 10  
Nose..... 5  
Chin..... 6  
Muzzle..... 5  
Profile..... 4

**BODY**..... 39 points  
Torso..... 11  
Legs..... 5  
Feet..... 5  
Tail..... 3  
Boning..... 8  
Musculature..... 7

**COAT/COLOR/PATTERN**. 21 points  
Length..... 4  
Texture..... 7  
Pattern..... 5  
Color..... 5

**CATEGORY:** Traditional.

**DIVISION:** Tabby.

**COLOR:** Brown Spotted Tabby.

**PERMISSIBLE OUTCROSSES:** None.

**HEAD:**

Shape and Size: Medium to large inverted pear.

Ears: Medium height, wide, deep base. Set as much on side as on top of head, slight outward tilt. Rounded top. Lynx tipping desirable, more prominent on the longhair. Pale thumbprint on backs.

Eyes: Medium-sized, heavily hooded soft triangle. Bushy brow. Deep set, one eye width apart. Gold or Brown or Gooseberry Green

Chin: Well-developed, fleshy, coarse fuzzy fur. Aligns with nose, obvious depth.

Muzzle: Full broad muzzle. Fleshy gently rounded whisker pads. Definite whisker break.

Nose: Wide, slightly convex. Large brick nose leather. Slight nose bump.

**NOTE:** Description of Chin/Muzzle/ Nose: Form an equal-sided soft diamond.

Profile: Slightly rounded forehead; concave curve, eye ridge to bridge of nose.

**BODY**

Torso: Substantial and rangy. Medium to large in size. Prominent shoulder blades. Back not level, slight upward slope toward hips. Hips medium width, prominent, slightly higher than shoulder sloping downward to tail. Deep flank, broad chest. Primordial belly pouch. Females proportionately smaller than males.

Legs: Long, hind legs slightly longer. Muscular with heavy boning.

Feet: Large, long, wide almost round, large fleshy toes. All toes except dew claws must rest on floor pointing forward.

Tail: Tail bone must be 2 inches minimum, maximum length to hock with leg extended. Articulated tail desirable, kinks and curls acceptable.

Boning: Heavy.

Musculature: Muscular build.

**COAT/COLOR/PATTERN:**

Length (PB): Short stand-up coat  
Belly hair longer

Length (PL): Medium, under 2 inches. Belly hair longer.

Texture (PB): Soft and wooly, having loft. Is resilient to the touch.

Texture (PL): Soft, lying closer to the body than shorthair. Semi-dense.  
**COLOR:** All shades of Brown Spotted Tabby; mouse coat; reversed ticking; light color throat to belly; paw pads/hocks dark brown/black; tail tip should be dark brown/black; white or cream band must surround eye; mascara marking from outer corner down through cheek.

**PATTERN:** Small to medium spots; muted by ticking; random spotting preferred. Belly must be spotted.

**MISCELLANEOUS:** Coat, color and pattern, secondary to type. Both coats facial hair is full and bushy, with downward growth pattern. Coat separates easily and is weather resistant.

**GENERAL DESCRIPTION:** The goal of the Pixiebob breeding program is to create a domestic cat with a visual similarity to the North American Bobcat. The Pixiebob comes in shorthair and longhair varieties. The most notable characteristics of the Pixiebob are the deep-set, heavily hooded eyes, well-developed fleshy chin and short tail.

**ALLOWANCES:** Polydactyl; seven toes maximum. Broken mackerel pattern allowed. Seasonal color changes. White lockets.

**PENALIZE:**

Coat: Belly too dark. Close lying (PB). Too long (PL).

Head: Deficient chin or brow. Flat head.

Body: Lacking primordial belly pouch. Narrow hips. Tail under 2 inches or past the hock. Cow hocking.

Feet: Poly toes, excluding dew claws, not touching table.

**WITHHOLD ALL AWARDS (WW):**

Coat: Any color/pattern not described. Lack of ticking or pattern throughout coat. Ruff around neck (PL).

Head: Round eyes.

Body: Fine boning.

**DISQUALIFY (DQ):** Tail under 1 inch or full length tail.



*Temperament must be unchallenging; any sign of definite challenge shall disqualify. The cat may exhibit fear, seek to flee, or generally complain aloud but may not threaten to harm. In accordance with Show Rules, ARTICLE SIXTEEN, the following shall be considered mandatory disqualifications: a cat that bites (216.9), a cat showing evidence of intent to deceive (216.10), adult whole male cats not having two descended testicles (216.11), cats with all or part of the tail missing, except as authorized by a Board approved standard (216.12.1), cats with more than five toes on each front foot and four toes on each back foot, unless proved the result of an injury or as authorized by a Board approved standard (216.12.2), visible or invisible tail faults if Board approved standard requires disqualification (216.12.4), crossed eyes if Board approved standard requires disqualification (216.12.5), total blindness (216.12.6), markedly smaller size, not in keeping with the breed (216.12.9), and depression of the sternum or unusually small diameter of the rib cage itself (216.12.11.1). See Show Rules, ARTICLE SIXTEEN for more comprehensive rules governing penalties and disqualifications.*

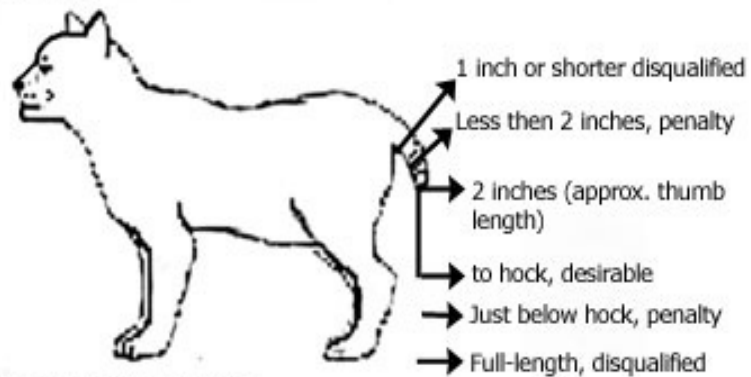
**EYE:**



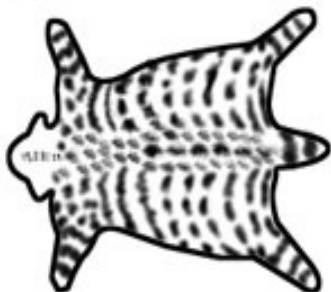
**HEAD:**



**BODY:**



**COAT PATTERN:**



**Example of allowed Pixie-Bob style broken mackerel.**